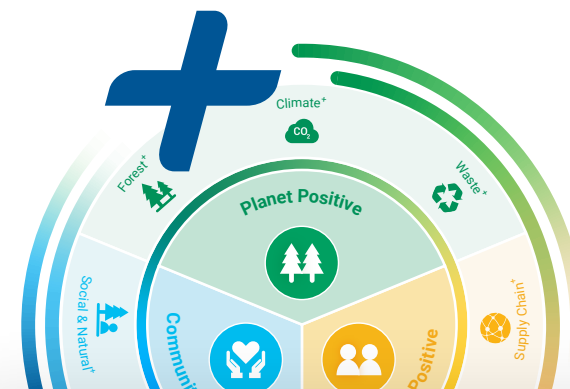


# Brambles' 2025 Sustainability Targets

Brambles' roadmap to regeneration is articulated in our ambitious 2025 sustainability targets. Our 2023 performance against these targets is outlined below.



## Planet Positive

Our commitment is to be Planet Positive by restoring forests, going beyond zero waste and drawing down more carbon than we produce, ultimately becoming a regenerative, nature positive business.

Target	UN SDG Alignment	FY23 Progress	Since FY22
<b>Forest Positive</b> <ul style="list-style-type: none"> <li>100% sustainable sourcing of timber</li> <li>Transformation of more forestry markets to Chain-of-Custody (CoC) certification</li> <li>Enable the sustainable growth of two trees for every tree used</li> </ul>		Sustainably sourced timber	100%
		CoC sourced timber	72.6%
		First Tree: Trees replanted through certified sustainable forestry programmes <sup>1</sup>	3.38m trees
<b>Climate Positive</b> <ul style="list-style-type: none"> <li>SBTi verified climate targets for full value chain aligned to a 1.5°C climate</li> <li>100% renewable electricity and all our operations will be carbon neutral by 2025</li> </ul>		Second Tree: Enabled the sustainable growth of second tree <sup>2</sup>	3.85m trees
		Carbon neutrality for operations (Scope 1 and 2 emission sources)	
		Electricity from renewable sources <sup>3</sup>	100%
<b>Waste Positive</b> <ul style="list-style-type: none"> <li>Zero product materials sent to landfills for all Brambles and subcontracted locations</li> <li>30% recycled or upcycled plastic waste in plastic products</li> </ul>		Performance against SBT (includes Scope 1, 2 and 3 emissions FY23 vs FY22) <sup>4</sup> Improvement of 7.7% against FY20 baseline (1,559 ktCO <sub>2</sub> -e)	1,439 ktCO <sub>2</sub> -e
		Number of Brambles new and next generation platforms containing recycled content <sup>5</sup>	13
		Brambles' total recycled plastic material purchased	20.2%
		Percentage of plants diverting product waste from landfill: <sup>6</sup>	
		• Brambles-managed plants	94.2%
		• Third-party plants	71.7%
• All plants	74.4%		

<sup>1</sup> This metric is directly connected to certified sourcing volumes each year. In FY23 reduced capital expenditure on new pallets compared to FY22 reduced the number of trees used and replanted.

<sup>2</sup> In FY21, Brambles acquired 10 timber farms in South Africa, totalling 3,950 hectares and 3.85 million trees. Through the introduction of new sustainable practices and a certification process, Brambles will enable the ongoing regeneration of trees, see page 24.

<sup>3</sup> Brambles' renewable electricity results include electricity from renewable contracts 39%, on-site generation 3% and Energy Attribute Certificates (EACs) 58%.

<sup>4</sup> See Brambles GHG emissions performance on page 26.

<sup>5</sup> This datapoint is not assured.

<sup>6</sup> Brambles purchase of recycled material has increased as new product innovations have been launched in FY23.



## Business Positive

Brambles will pioneer regenerative supply chains by improving our circular model every year, increase the environmental benefits in our customers' supply chains and build a safe, inclusive and respectful workplace.

Target	UN SDG Alignment	FY23 Progress	Since FY22	
<b>Supply Chain Positive</b> <ul style="list-style-type: none"> <li>Increase environmental benefits in our customers' supply chains through circular model</li> </ul>		Increased our positive environmental impact across our customers' supply chains. <sup>1</sup>	1.9 m tonnes of CO <sub>2</sub> -e 4,276 megalitres of water 3.1m cubic metres of wood 3.0m trees 1.2m tonnes of waste	3.0% decrease 2.4% decrease ↓ 1.9% decrease 1.9% decrease 2.9% decrease
		Ellen MacArthur Foundation (EMF) Circulytics score	A	✓ Achieved
<b>Positive Collaboration</b> <ul style="list-style-type: none"> <li>Double the number of customer collaborations through our ZWW from 250 to 500</li> </ul>		Customers in collaboration <sup>2</sup>	358	↓ 3.2% decrease
		Collaborative initiatives	1,762	↑ 18.4% increase
		CO <sub>2</sub> -e saved <sup>3</sup>	92,375 tonnes	↓ 12.8% decrease
<b>Workplace Positive</b> <ul style="list-style-type: none"> <li>25% reduction in BIFR</li> <li>At least 40% women in management roles</li> </ul>		BIFR performance	3.8	↑ 7.3% improvement
		Top Employer accreditation	Achieved in 25 countries	✓ Achieved
		Women on the Board	45.5%	↑ 5 pts improvement
		Women in management roles	36.3%	↑ 3 pts improvement



## Communities Positive

Brambles' Communities Positive programme will build resilience, promote circularity and account for the connections between society, the economy and nature.

Target	UN SDG Alignment	FY23 Progress	Since FY22	
<b>Food Positive</b> <ul style="list-style-type: none"> <li>Collaborate with food banks to serve rescued food to at least 10 million people per year</li> </ul>		People receiving meals through Brambles' support for food rescue organisations	19.7m globally	✓ Achieved
<b>Circular Economy Transformation</b> <ul style="list-style-type: none"> <li>Advocate, educate and impact one million people to become circular economy change makers</li> </ul>		People reached through our communications, training and advocacy	903,500 (Cumulative result since FY21)	↑ Improvement
<b>Positive Impacts for People and Our Planet</b> <ul style="list-style-type: none"> <li>Adopt leading natural and social capital accounting approaches</li> </ul>		Brambles has trialled and applied a draft carbon accounting approach developed by the GHG Protocol to understand the biogenic <sup>4</sup> carbon that flows through our full value chain.		

● Performance above FY22 ● Performance below FY22

<sup>1</sup> Environmental benefit metrics are directly linked to volume of products issued compared to previous period. Lower product issue volumes in FY23 compared to FY22 have resulted in lower environmental benefit estimations. FY22 environmental benefits have been restated to reflect an updated LCA for Australia. Further details will be available in the Brambles Sustainability Review 2023 – Supplementary Information.

<sup>2</sup> Fewer customers in collaboration resulted from reduced transport orchestration between customers, and more focus on asset availability discussions.

<sup>3</sup> Total kilometres saved increased by 5%. Reduced CO<sub>2</sub>-e savings are due to improved logistics emissions factors since FY22.

<sup>4</sup> Biogenic carbon refers to carbon that is sequestered from the atmosphere during biomass growth and may be released back to the atmosphere later due to combustion of the biomass or decomposition.